



## WICHITA SKI CLUB

### General Meeting

#### River City Brewery

(upstairs)

150 N. Mosley

Tuesday, February 19<sup>th</sup>

Social Hour 6:30 p.m.  
Meeting 7:30 p.m.

If you would like to submit an article for the newsletter, please e-mail **Mark**

### Commando Ski Trip

February 23, 2008

Drive out to **Weston, Mo**

Trip Leader:

Steve Ashmore

Cell 208-6347

# SNO



Tuesday, February 5<sup>th</sup>

Victory Sports Bar

**Fat Tuesday**

2319 N. Ridge Rd  
5:30 p.m. to ?

# FLATLANDER

## NEWSLETTER

Vol. 31, No. 1

P.O. Box 2451 • Wichita, KS 67201

January 2008

website: [www.wichitaskiclub.com](http://www.wichitaskiclub.com) • email: [webmaster@wichitaskiclub.com](mailto:webmaster@wichitaskiclub.com)

### Crested Butte Ski Trip Fun for All

52 inches of snow in 7 days may be to much. Marvelous and spectacular, the snow at Crested Butte Mountain is simply unbelievable. 71 inches total depth is what the CB snow report said.

27 Wichita Ski Club members left for Crested Butte Jan 3. We ate breakfast in Gunnison and arrived in Crested Butte and had 4 of our rooms ready for change rooms. Michelle did a great job getting us a location close to the ski lifts and a great place to stay. The Lodge at Mountaineer Square was the best we have had.

Nancy fixed some very good dips and spreads for the wine and cheese party. The only thing was we could not

find the cheese. I ran across the street to a small store and bought all the cheese they had. Guess what! Later we found the cheese in the bottom of one of the coolers, so we would have a second wine and cheese party on the bus.

With all the snow and more on the way, we decided to leave early at 12 o'clock Sunday and arrived in Wichita at 3 AM. I think everyone had a good time. We had two guests on the trip with us, **Gary Lowe's** daughter and son-in-law. They came Thursday night and left Friday morning, afraid they might be snowed in.

Hope to see a lot of you on the Steamboat Trip! - J.D.

### Wichita Ski Club Trip Information

For all Ski trips it is each participant's responsibility to make payments on time. Membership is required for all bus ski trips.

Membership dues and sign-up information is used to send out newsletters, so please be sure to keep your information up to date and current.

Be sure to checkout [www.wichita.skiclub.com](http://www.wichita.skiclub.com) for the latest information on trips and events.

#### Steamboat, CO – FSA trip

Ski & Snowboard racing optional

**Jan. 30th – Feb. 3rd, 2008** for 5 days skiing

- Trip lodging, FSA activity pass and transportation is \$505
- Ski the legendary Champagne Powder at Steamboat Ski Resort in Colorado
- We will be staying at The Phoenix Condos (hot tub and heated pool).
- Take the shuttle or walk to the slopes

- Ski or snowboard over 3000 acres of terrain. Visit downtown Steamboat for some great food or shopping.
- Help your club take first place on the 44th Annual Flatlands Ski Association Ski Trip. (Racing is included in the price of the trip, but you don't have to race to go on this trip!)

What is included:

- Lodging for 4 nights (5 Ski Days)
- Sleeper bus leaving the evening of Tuesday, January 29th (drinks on the bus are provided). Returns Sunday, February 3rd, arrives on 4th.
- FSA activity pass (entry to Challenge races, opening night party, awards banquet dinner and beverages)

Lift Tickets available at the FSA rates:

\$170 for 5 day pass

(Continued on Page 2)

(Continued from Page 1)

\$144 for 4 day pass  
\$111 for 3 day pass  
\$90 for 2 day  
\$45 / day  
Seniors (70 years and older)  
\$25/day

**Trip Captain: Andrea Duggan**

3225 N. North Shore Ct.  
Wichita, KS 67205  
aduggan@cessna.textron.com  
Day: 316-517-8348  
Evening: 316-262-6127  
Cell: 316-617-4416

**Breckenridge Spring Break Trip**

**Mar. 19th – Mar. 22nd, 2008** for 4 days skiing

- Trip Lodging and transportation is \$350
- 3 nights Lodging is at the SAW MILL CREEK Condo's
- Travel by PRESTIGE Charter sleeper bus
- Beverages on the bus
- SAW MILL CREEK is located at the edge of Downtown Breckenridge, and is considered a ski-in condo.
- Full kitchens
- The free Shuttle bus stop is one block south of the condos.
- Extremely easy walk to great restaurants and local bars.
- Pool and hot tubs located in the club house.
- Medium occupancy accommodations which means that some will be sleeping on a sleeper sofa.
- Bus Leaves the Cessna Activity Center at 6:30pm on Mar. 18th
- Bus to leave Breckenridge at 4 p.m. Saturday evening, that way you can attend Easter services back at home.

**Trip Captain:**

**Herb Schnoetinger**

4423 E. Mt. Vernon  
Wichita, KS 67218  
316-686-4769 (Home)

**Next Payment:**

02/19/08 \$150  
Minimum cancellation fee \$50

# From the Editor

I recently came across an article in a farm magazine I receive and thought I would share the story and some photos.

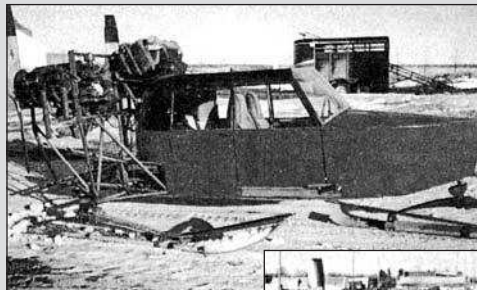
Clifford Gleason of Tolna, North Dakota was needing a winter project, so he bought an old snow plane. For those unfamiliar with snow planes, they are propeller-powered sleds, used for winter travel in the days before snowmobiles. They look like a shortened light plane, with the propeller mounted at the rear. Snow planes sit on 3 wide, ribbed skis and are steered with the front center ski.

Snow planes were popular in the late '50's and '60's in the Northern Plains because they were capable of negotiating snow covered terrain

when roads couldn't be kept clear or where there were no roads. The article states that they were used for hauling mail, transporting people to the doctor, checking power lines, hunting, and just having fun.

For more power, Gleason installed 2 Lycoming 125 engines spaced 2' apart in the snow plane pictured here.

Gleason has formed a small group called the Prairie Snowplanners. The article says he and the entire group would love to hear from others interested in restoring and using snow planes. Contact: FARM SHOW followup, Clifford Gleason, 302 Margaret Street, Tolna, N. Dakota 58380, 701-262-4932.



Clifford Gleason's early model snow plane (above and right) was popular in the 50's and 60's.



## WSC 2008 SUPER BOWL PARTY

**FEBRUARY 3, 2008**

**Walt and Debra Chapelle's**

646 18th Fairway  
Andover, KS 67002  
(H) 733-6292  
(cell) 304-6745

Please bring chili and fixing's to go with it and a side dish to pass.  
**BYOB-PLEASE BRING YOUR OWN BEVERAGE.** Directions will be posted at [www.wichitaskiclub.com](http://www.wichitaskiclub.com). Hope to see you there!



**Welcome New Member**

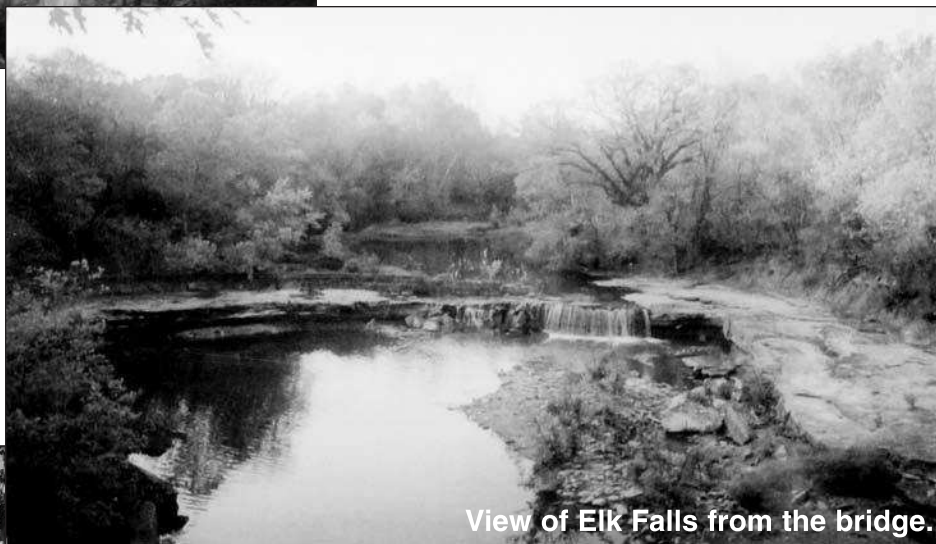
**David Barker**



# WSC Elk Falls Trip



View of Elk Falls



View of Elk Falls from the bridge.



# WICHITA SKI CLUB, INC.

P.O. BOX 2451  
WICHITA, KANSAS 67201

U.S. Postage

PAID

Wichita KS  
Permit 1495

ADDRESS SERVICE REQUESTED



## Wichita Ski Club Membership Registration



\$35 SINGLE     \$50 FAMILY

NAME \_\_\_\_\_

ADDRESS \_\_\_\_\_

CITY \_\_\_\_\_ STATE \_\_\_\_\_ ZIP \_\_\_\_\_

HM PHONE \_\_\_\_\_ CELL \_\_\_\_\_

E-MAIL ADDRESS \_\_\_\_\_

Please mail your payment and registration to:

Wichita Ski Club  
P.O. Box 2451  
Wichita, KS 67201